

### SC Opticom® Fiber Adapter Panels (FAPs)

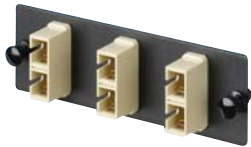
- Loaded with TIA/EIA-604 FOCIS-3 compliant adapters
- Exceed TIA/EIA-568-C.3 requirements
- Adapter housing colors follow TIA/EIA-568-C.3 suggested color identification scheme
- Snap quickly into the front of all Opticom® components
- Choice of phosphor bronze or zirconia ceramic split sleeves to fit specific network requirements; zirconia ceramic split sleeves are recommended for OM3/OM4 multimode and OS1/OS2 singlemode applications
- Q.C. number and split sleeve material laser marked on every adapter assures 100% traceability and quick and easy identification of split sleeve material
- SC adapters are also available in QuickNet™ Fiber Optic Cassettes on pages C.46 – C.53, Mini-Com® Modules on page C.35, or separately on page C.30 to provide a complete SC system solution



FAP6WAQDSCZ



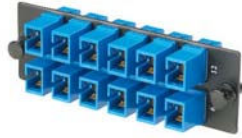
FAP4WBLDSC



FAP3WEIDSC

Part Number	Part Description	Std. Pkg. Qty.	Std. Ctn. Qty.
<b>SC Fiber Adapter Panels – 10Gig™ OM3/OM4 50/125µm (Aqua Adapters)</b>			
FAP6WAQSCZ	SC 10Gig™ FAP loaded with six SC 10Gig™ Simplex Multimode Fiber Optic Adapters (Aqua) with zirconia ceramic split sleeves.	1	10
FAP6WAQSC	SC 10Gig™ FAP loaded with six SC 10Gig™ Simplex Multimode Fiber Optic Adapters (Aqua) with phosphor bronze split sleeves.	1	10
FAP2WAQDSCZ	SC 10Gig™ FAP loaded with two SC 10Gig™ Duplex Multimode Fiber Optic Adapters (Aqua) with zirconia ceramic split sleeves.	1	10
FAP3WAQDSCZ	SC 10Gig™ FAP loaded with three SC 10Gig™ Duplex Multimode Fiber Optic Adapters (Aqua) with zirconia ceramic split sleeves.	1	10
FAP4WAQDSCZ	SC 10Gig™ FAP loaded with four SC 10Gig™ Duplex Multimode Fiber Optic Adapters (Aqua) with zirconia ceramic split sleeves.	1	10
FAP6WAQDSCZ	SC 10Gig™ FAP loaded with six SC 10Gig™ Duplex Multimode Fiber Optic Adapters (Aqua) with zirconia ceramic split sleeves.	1	10
FAP2WAQDSC	SC 10Gig™ FAP loaded with two SC 10Gig™ Duplex Multimode Fiber Optic Adapters (Aqua) with phosphor bronze split sleeves.	1	10
FAP3WAQDSC	SC 10Gig™ FAP loaded with three SC 10Gig™ Duplex Multimode Fiber Optic Adapters (Aqua) with phosphor bronze split sleeves.	1	10
FAP4WAQDSC	SC 10Gig™ FAP loaded with four SC 10Gig™ Duplex Multimode Fiber Optic Adapters (Aqua) with phosphor bronze split sleeves.	1	10
FAP6WAQDSC	SC 10Gig™ FAP loaded with six SC 10Gig™ Duplex Multimode Fiber Optic Adapters (Aqua) with phosphor bronze split sleeves.	1	10
<b>SC Fiber Adapter Panels – OM2 50/125µm (Black Adapters)</b>			
FAP6WBLSC	SC FAP loaded with six SC simplex multimode fiber optic adapters (Black) with phosphor bronze split sleeves.	1	10
FAP12WBLSC	SC FAP loaded with twelve SC simplex multimode fiber optic adapters (Black) with phosphor bronze split sleeves.	1	10
FAP2WBLDSC	SC FAP loaded with two SC duplex multimode fiber optic adapters (Black) with phosphor bronze split sleeves.	1	10
FAP3WBLDSC	SC FAP loaded with three SC duplex multimode fiber optic adapters (Black) with phosphor bronze split sleeves.	1	10
FAP4WBLDSC	SC FAP loaded with four SC duplex multimode fiber optic adapters (Black) with phosphor bronze split sleeves.	1	10
FAP6WBLDSC	SC FAP loaded with six SC duplex multimode fiber optic adapters (Black) with phosphor bronze split sleeves.	1	10
<b>SC Fiber Adapter Panels – OM1 62.5/125µm (Electric Ivory Adapters)</b>			
FAP6WEISC	SC FAP loaded with six SC simplex multimode fiber optic adapters (Electric Ivory) with phosphor bronze split sleeves.	1	10
FAP12WEISC	SC FAP loaded with twelve SC simplex multimode fiber optic adapters (Electric Ivory) with phosphor bronze split sleeves.	1	10
FAP2WEIDSC	SC FAP loaded with two SC duplex multimode fiber optic adapters (Electric Ivory) with phosphor bronze split sleeves.	1	10
FAP3WEIDSC	SC FAP loaded with three SC duplex multimode fiber optic adapters (Electric Ivory) with phosphor bronze split sleeves.	1	10
FAP4WEIDSC	SC FAP loaded with four SC duplex multimode fiber optic adapters (Electric Ivory) with phosphor bronze split sleeves.	1	10
FAP6WEIDSC	SC FAP loaded with six SC duplex multimode fiber optic adapters (Electric Ivory) with phosphor bronze split sleeves.	1	10

Table continues on page C.42

**SC Opticom<sup>®</sup> Fiber Adapter Panels (FAPs) (continued)****FAP12WBUSCZ****FAP4WBUDSCZ****FAP12WAGSCZ**

Part Number	Part Description	Std. Pkg. Qty.	Std. Ctn. Qty.
<b>SC Fiber Adapter Panels – OS1/OS2 9/125µm (Blue Adapters)</b>			
<b>FAP6WBUSCZ</b>	SC FAP loaded with six SC simplex singlemode fiber optic adapters (Blue) with zirconia ceramic split sleeves.	1	10
<b>FAP12WBUSCZ</b>	SC FAP loaded with twelve SC simplex singlemode fiber optic adapters (Blue) with zirconia ceramic split sleeves.	1	10
<b>FAP2WBUDSCZ</b>	SC FAP loaded with two SC duplex singlemode fiber optic adapters (Blue) with zirconia ceramic split sleeves.	1	10
<b>FAP3WBUDSCZ</b>	SC FAP loaded with three SC duplex singlemode fiber optic adapters (Blue) with zirconia ceramic split sleeves.	1	10
<b>FAP4WBUDSCZ</b>	SC FAP loaded with four SC duplex singlemode fiber optic adapters (Blue) with zirconia ceramic split sleeves.	1	10
<b>FAP6WBUDSCZ</b>	SC FAP loaded with six SC duplex singlemode fiber optic adapters (Blue) with zirconia ceramic split sleeves.	1	10
<b>SC Fiber Adapter Panels – APC OS1/OS2 9/125µm (Green Adapters)</b>			
<b>FAP6WAGSCZ</b>	SC APC FAP loaded with six SC APC simplex singlemode fiber optic adapters (Green) with zirconia ceramic split sleeves.	1	10
<b>FAP12WAGSCZ</b>	SC APC FAP loaded with twelve SC APC simplex singlemode fiber optic adapters (Green) with zirconia ceramic split sleeves.	1	10
<b>FAP2WAGDSCZ</b>	SC APC FAP loaded with two SC APC duplex singlemode fiber optic adapters (Green) with zirconia ceramic split sleeves.	1	10
<b>FAP3WAGDSCZ</b>	SC APC FAP loaded with three SC APC duplex singlemode fiber optic adapters (Green) with zirconia ceramic split sleeves.	1	10
<b>FAP4WAGDSCZ</b>	SC APC FAP loaded with four SC APC duplex singlemode fiber optic adapters (Green) with zirconia ceramic split sleeves.	1	10
<b>FAP6WAGDSCZ</b>	SC APC FAP loaded with six SC APC duplex singlemode fiber optic adapters (Green) with zirconia ceramic split sleeves.	1	10